



PERIN Portugal in Europe
Research and Innovation Network

FCT Fundação
para a Ciência
e a Tecnologia

ANI AGÊNCIA NACIONAL
DE INOVAÇÃO

**PORTUGAL
SPACE**

AICIB Erasmus+

DGES
Direção-Geral do Ensino Superior

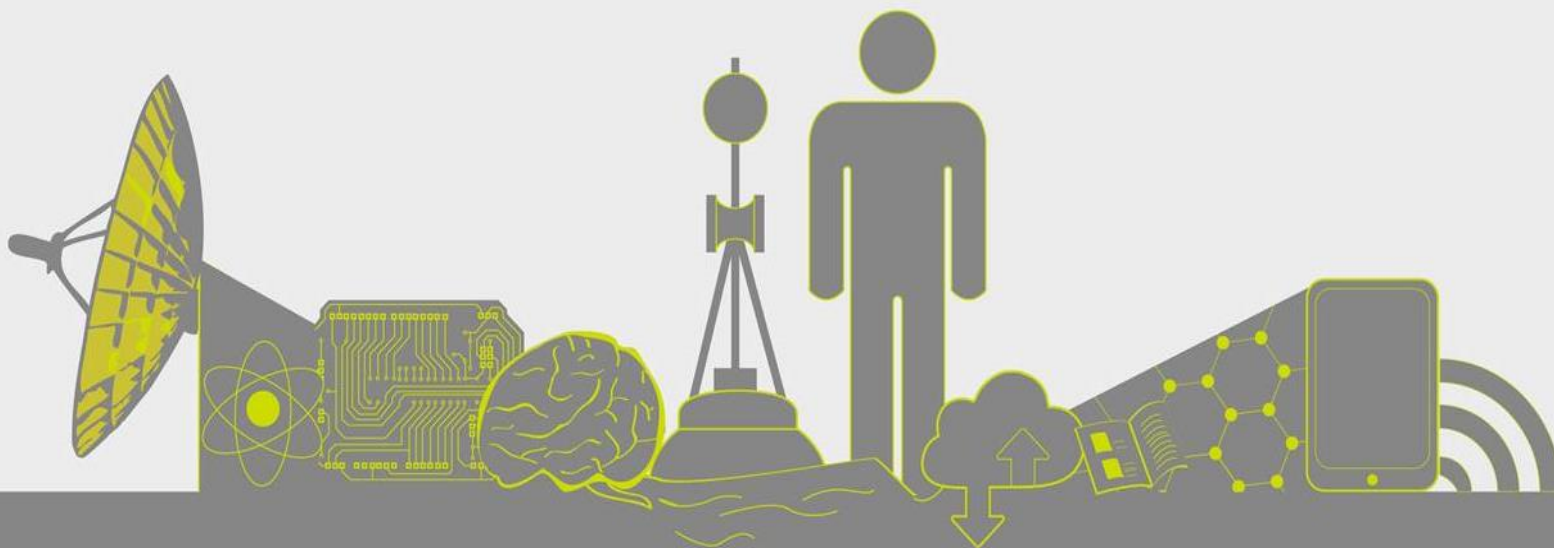
CIÊNCIA VIVA

SESSION OUTLINE

- Opening Remarks – *José Paulo Esperança, FCT*
- FCT and Portugal in Europe Research and Innovation Network (PERIN) – *Luís Mota, FCT*
- Horizon Europe – Horizontal Activity (*Widening*)
 - *Rui Munhá/Luís Mota (NCPs)*
- Design and Implementation of a Teaming Project
 - *Rodrigo Cunha (UC)*
- Concluding Remarks

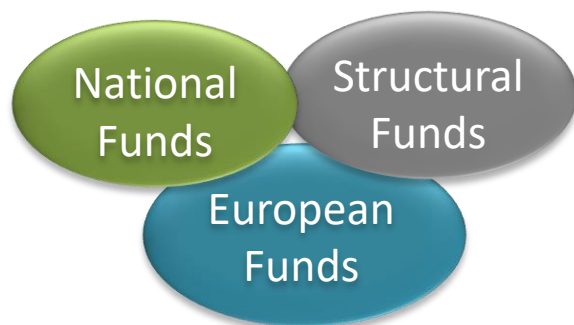
Horizon Europe – Horizontal Activity (*Widening*)

TWINNING, TEAMING, ERA-CHAIRS, COST, and others...



Opening Remarks: Strategic Outline

Leverage Effect & Complementarity



Targets



Cooperation & Interlinkages



Horizon Europe: 2021-2027

Pillar 1

Excellent Science

European Research Council

Marie Skłodowska-Curie
Actions

Research Infrastructures

Pillar 2

Global Challenges and
European Industrial
Competitiveness

- Clusters
- Health
 - Culture, Creativity and Inclusive Society
 - Civil Security for Society
 - Digital, Industry and Space
 - Climate, Energy and Mobility
 - Food, Bioeconomy, Natural Resources, Agriculture and Environment

Joint Research Centre

Pillar 3

Innovative Europe

European Innovation Council

European innovation
ecosystems

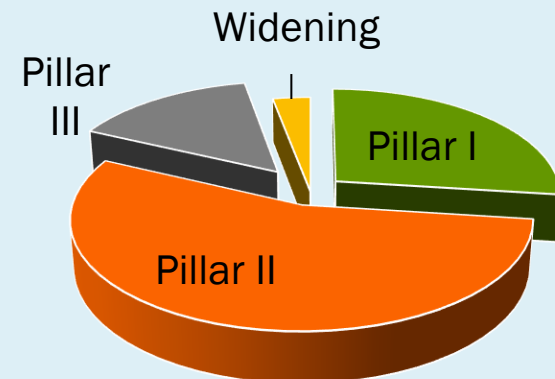
European Institute of
Innovation
and Technology

Widening Participation and Strengthening the European Research Area

Widening participation and spreading excellence

Reforming and Enhancing the European R&I system

Horizon Europe Budget Breakdown



Horizon Europe: 2021-2027

PERIN Portugal in Europe
Research and Innovation Network

FCT: NCPs and National Delegates



📍 Rui Munhá
✉️ rui.munha@fct.pt
☎️ (+351) 213 911 538

ERC, Widening



📍 Luís Mota (FCT)
✉️ luis.mota@fct.pt
☎️ (+351) 213 917 648

ERC, MSCA, Widening
JRC, EURATOM



📍 Marta Abrantes (FCT)
✉️ marta.abrantes@fct.pt
☎️ (+351) 213 911 596

RIIs, ERIC



📍 David Marçal (FCT)
✉️ david.marcal@fct.pt
☎️ (+351) 213 924 350

MSCA



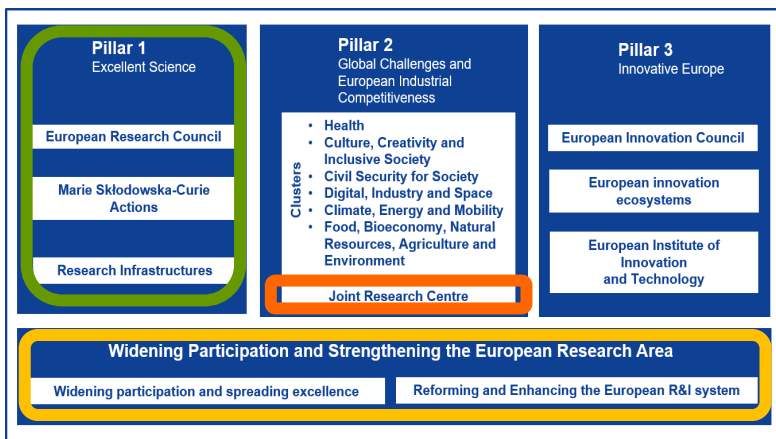
📍 Daniel Carapau (FCT)
✉️ daniel.carapau@fct.pt
☎️ (+351) 213 911 514

RIIs



📍 Rita Cavaleiro (FCT)
✉️ rita.cavaleiro@fct.pt
☎️ (+351) 213 911 541

EURATOM



Horizontal Activity (Widening)

Widening Participation and Strengthening the European Research Area: *Empowering People and Institutions*

PERIN Portugal in Europe
Research and Innovation Network

NCPs and National Delegates



📍 Rui Munhá
✉️ rui.munha@fct.pt
☎️ (+351) 213 911 538



📍 Luís Mota (FCT)
✉️ luís.mota@fct.pt
☎️ (+351) 213 917 648



Horizontal Activity (Widening): Introduction

Widening Participation and Strengthening the European Research Area

Widening participation and spreading excellence

Reforming and Enhancing the European R&I system

Problems

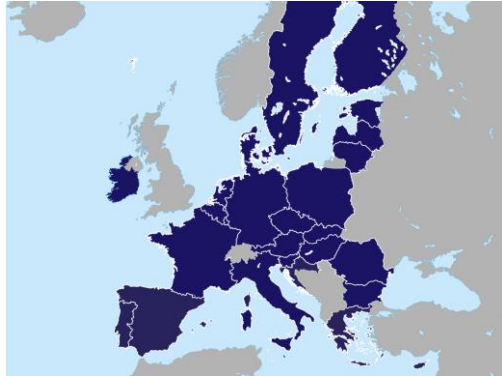
- Disparities between **national R&I systems** (R&I divide is a reality), which translate into low **participation levels** and below average **success rates**;
- **Information and language** barriers;
- Lack of professional **contacts and research networks**, as well as **supporting management/administrative** structures;
- Lack of **leadership experience** and **specialised training** at research organisations in proposal submission and transnational collaborative projects;
- Low **connectivity** and little experience in **cross-country cooperation**;
- Generally, low focus on **R&I in policy** and in **business** and few options for **exploitation of research results** at the national level.

Solutions

- **Capitalising on synergies** with other policy domains and funding programmes;
- Consider **other parts of the Framework Programme** and cover also actions to be undertaken by **MS and regions themselves**;
- Strive towards more **excellence** and promote a more **inclusive** approach in which **all can participate** and from which **all can benefit**.

Horizontal Activity (Widening): Introduction

EU MEMBER STATES



EU ASSOCIATED COUNTRIES

- Albania
- Armenia
- Bosnia & Herzegovina
- Faroe Islands
- Georgia
- Iceland
- Israel
- North Macedonia
- Moldova
- Montenegro
- Norway
- Serbia
- Tunisia
- Turkey
- United Kingdom
- Ukraine
- Switzerland

WIDENING COUNTRIES

- Bulgaria
 - Croatia
 - Cyprus
 - Czech Rep.
 - Estonia
 - Greece
 - Hungary
 - Latvia
 - Lithuania
 - Malta
 - Poland
 - **Portugal**
 - Romania
 - Slovakia
 - Slovenia
- Albania
 - Armenia
 - Bosnia & Herzegovina
 - Faroe Islands
 - North Macedonia
 - Georgia
 - Moldova
 - Montenegro
 - Serbia
 - Tunisia
 - Turkey
 - Ukraine

Horizontal Activity (Widening): Introduction



Horizontal Activity (Widening): Introduction

Synergies

- Regional Policy
- Neighbourhood Policies

Reforms and Transformation

- TEAMING for Excellence
- Excellence UNIVERSITIES
- ERAdvance
- Policy Support Facility

Connectivity

- COST
- TWINNING

Linking Science and Business

- Excellence HUBS
- EIC Accelerator (Widening Scale-Up)
- Innovation in HEIs

Capacity Building and Inclusiveness

- NCP Support
- HOP-ON
- SEAL OF EXCELLENCE
- LINK TO ERC, EIT, RIs

Brain Circulation

- ERA Policy Initiative
- ERA-CHAIRS

Horizontal Activity (Widening): traditional instruments

TWINNING

Institutional Networking

Strengthen Specific Research Field

Widening linked to at least 2 leading RPOs in MS or AC

NEW: 25% of Requested Funding allocated to Research

ERA-CHAIRS

Bringing Excellence to Institutions

NEW: Two Parties Applications (coordinator and partner organisations); 10% Requested Funding to Research; Extended Duration

TEAMING FOR EXCELLENCE

Institutional Building

Centres of Excellence in a Research Field

NEW: 2 Phases replaced by 1 Phase in a two-stage evaluation

COST

Networking Actions

NEW: 50% of the budget will have to directly benefit Widening Countries; 80% of Activities will have significant Widening Dimension; COST Innovator Grant; COST Academy

Horizontal Activity (Widening): Novelties

NEW!

EXCELLENCE HUBS

At least two widening possibly extended to partners outside and ability to conduct Pilots

EXCELLENCE UNIVERSITIES

Excellence combined with inclusiveness. R&I dimension of the European Universities Initiative; Inclusiveness KPI tbd

BRAIN CIRCULATION

Attract Talent

Succeeds Widening Fellowships Pilot

Similar conditions to MSCA Postdocs

Important: 2 years, implemented through MSCA mechanisms, in view of more permanent positions

HOP ON

Improve Inclusiveness on Collaborative R&I projects

Open Up Closed Networks and Silos

Important: up to 5% top-up to project budget. Maximum of 3% of Widening Budget to this Activity

Twinning: Institutional Networking

TWINNING

Institutional Networking

Strengthen Specific Research Field

Widening institution linked to
at least 2 leading RPOs in MS or AC

**NEW: 25% of Requested Funding
allocated to Research**

AIM OF THE ACTION

Strengthen a defined field of research in a higher education institution or research organisation from a **Widening country** by linking it with **at least two internationally-leading** research institutions in other **Member States or Associated Countries**.

MAIN OBJECTIVES

- **Enhance the S&T capacity** of the institutions (focus on institution in Widening country)
- **Raise the research profile** of the institution and of its research staff

Twinning: Institutional Networking

TWINNING

Institutional Networking
Strengthen Specific Research Field

- **Project Dimension:** up to 1.5 M€
- **Project Duration:** up to 3 years
- **Coordinator:** institution located in a Widening MS/AC
- **Consortium:** minimum of TWO additional partners from two different MS or AC other than the country of the coordinator

ACTIVITIES

- Short term staff exchanges;
- Expert visits and short-term training;
- Workshops; conference attendance; organisation of joint summer-school type activities;
- Dissemination, networking and outreach activities;
- **NEW!** ~25% of requested funding eligible for research, consumables and small equipment.

Twinning: Institutional Networking

TWINNING

Institutional Networking

Strengthen Specific Research Field

- **Project Dimension:** up to 1.5 M€
- **Project Duration:** up to 3 years
- **Coordinator:** institution located in a Widening MS/AC
- **Consortium:** minimum of TWO additional partners from two different MS or AC other than the country of the coordinator

IMPACTS

- increased **level of research excellence** of the coordinating institution in the **particular field of research**;
- improve the **R&I culture** of the coordinator country;
- enhanced **reputation, attractiveness** and **networking** channels;
- openness for **creativity**, development of **new approaches** and staff exchanges, which will boost **brain circulation**;
- Improved **capability to succeed** in competitive research funding;

COST: Activities Connecting People and Ideas

COST

Networking Actions

- **50% of the budget** will have to directly benefit Widening Countries;
- **80% of Activities** will have significant Widening Dimension;
- **COST Innovator Grant; COST Academy**

AIM OF THE ACTION

Strengthen a defined field of research in a higher education institution or research organisation from a **Widening country** by linking it with **at least two internationally-leading** research institutions in other **Member States or Associated Countries**.

MAIN OBJECTIVES

- **Enhance the S&T capacity** of the institutions- Focus on institution in Widening country
- **Raise the research profile** of the institution and of its research staff

COST: Activities Connecting People and Ideas

Open spaces where you can grow

COST Networking Activities:

COST Actions (networks on a particular topic, collaborating across borders). Other networking instruments are available for those participating (or not) in COST Actions.

INNOVATOR GRANT

ACADEMY

**CROSS CUTTING
ACTIVITIES**

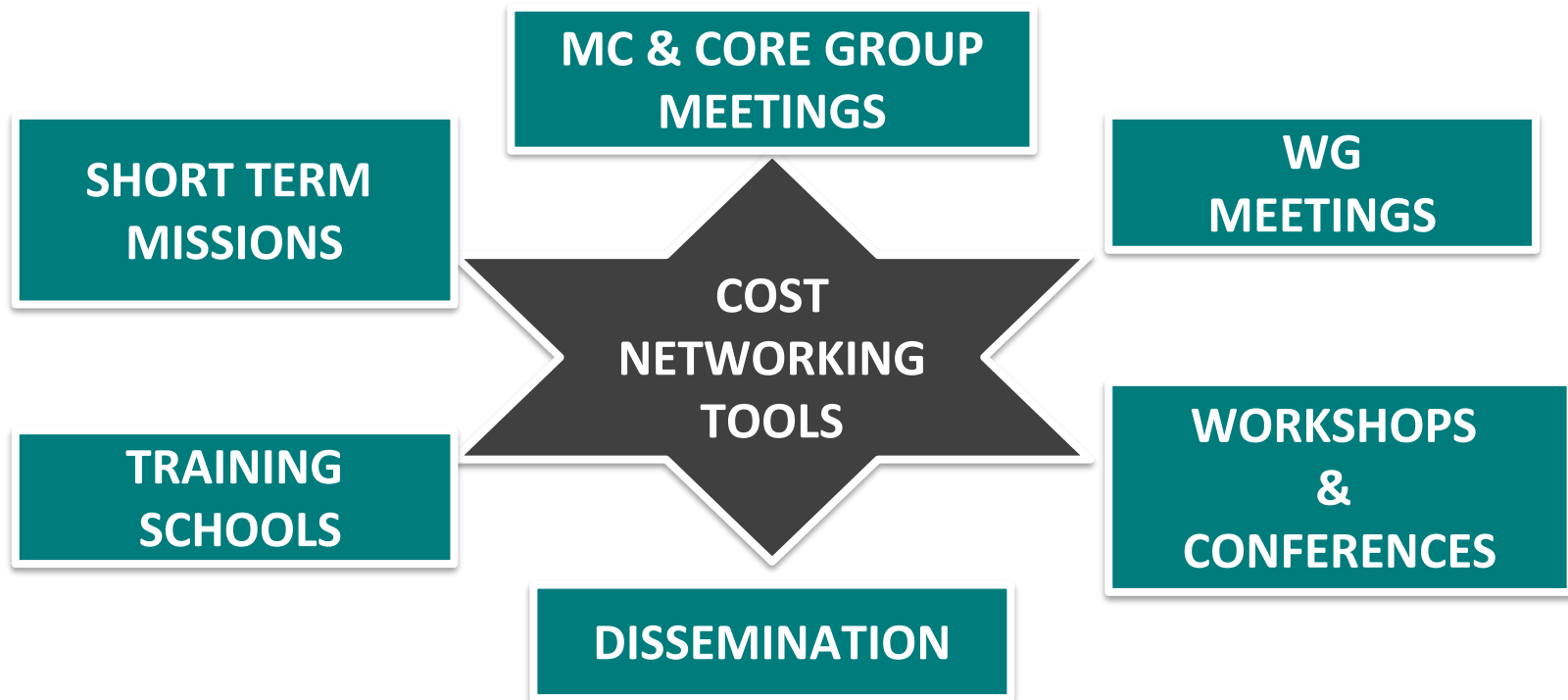
CONNECT

**SUBMIT A
PROPOSAL FOR
A NEW COST
ACTION**

**EXPRESS
INTEREST IN
JOINING A
RUNNING COST
ACTION**

COST: Activities Connecting People and Ideas

Activity Plan: 4 years to make use of COST tools



**COST DOES NOT FUND
HUMAN RESOURCES*, CONSUMABLES AND EQUIPMENT**

** Exception is administrative support to the management of the COST Action*

ERA-CHAIRS: Bringing Excellence

ERA-CHAIRS

Bringing Excellence to Institutions

NEW!

- **Two Parties Applications (coordinator and partner organisation);**
- **10% Requested Funding to Research; Extended Duration**

AIM OF THE ACTION

Create the appropriate conditions and attract in a sustainable manner **outstanding scientists and team members as game changers** to universities or research organisations in catching up countries and regions with the potential for excellence.

MAIN OBJECTIVES

- Support for universities or research organisations to **hire an outstanding researcher/research manager** and their team;
- Institutions should **implement structural changes** to achieve excellence on a sustainable basis in the chosen scientific domain and **to modify their R&I landscape**;
- Raise the attractiveness of the institution and **promote a healthy and balanced brain circulation**;

ERA-CHAIRS: Bringing Excellence

ERA-CHAIRS

Bringing Excellence to Institutions

- **Project Dimension:** up to 2.5 M€
- **Project Duration:** up to 6 years
- **Coordinator:** institution located in a Widening MS/AC
- **Consortium:** additional partner organisation

ERA-CHAIR HOLDER

- Position must be **open to all EU and non-EU nationals** (R4 – Leading researcher level)
- **ERA-Chair Holder:**
 - Excellent researcher and research manager in the given field;
 - Proven leadership record;
 - Establishes own team, integrated in the host;
 - Position should allow to make decisions regarding resource allocation, supervise team members, and apply for research funding;

ERA-CHAIRS: Bringing Excellence

ERA-CHAIRS

Bringing Excellence to Institutions

- **Project Dimension:** up to 2.5 M€
- **Project Duration:** up to 6 years
- **Coordinator:** institution located in a Widening MS/AC
- **Consortium:** additional partner organisation

ACTIVITIES

- I. **ELIGIBLE COSTS RELATED TO ERA-CHAIR HOLDER AND TEAM**
 - Salaries
 - Recruitment costs
 - Administrative costs
 - Travel costs
- II. **ELIGIBLE COSTS RELATED TO STRUCTURAL CHANGES**
 - Trainings
 - Meetings
 - Publications & IPR
 - Research, Consumables and Small Equipment: up to 10%

ERA-CHAIRS: Bringing Excellence

ERA-CHAIRS

Bringing Excellence to Institutions

- **Project Dimension:** up to 2.5 M€
- **Project Duration:** up to 6 years
- **Coordinator:** institution located in a Widening MS/AC
- **Consortium:** additional partner organisation

IMPACTS

- Institutional changes allowing **full participation and integration in the ERA** (and its priorities);
- Increased **attractiveness of institution** for internationally excellent and mobile researchers;
- “**brain gain**” and creation of **pockets of excellence**;
- Improved capability to **compete successfully** for international and competitive research funding;

TEAMING for Excellence: Institutional Building

TEAMING FOR EXCELLENCE

Institutional Building

Centres of Excellence
in a Research Field

AIM OF THE ACTION

Create new (or significant update of existing) centres of excellence in Widening countries through a coupling process with a leading scientific institution.

MAIN OBJECTIVES

- **Engage countries and regions strategically** in a path of innovative growth **through the Centres of Excellence**, building on new developed capabilities;
- **Maximise and spread the benefits of research and innovation** across the EU, regarded as vital for regions, countries and Europe's competitiveness;
- **Help countries and regions** that are lagging behind in R&I performance to **attain a competitive position** in the global value chains.

TEAMING for Excellence: Institutional Building

TEAMING FOR EXCELLENCE

Institutional Building

Centres of Excellence in a Research Field

- **Project Dimension:** up to 15 M€
- **Project Duration:** 6-8 years
- **Coordinator:** institution located in a Widening MS/AC
- **Consortium:** additional partner with an international reputation in R&I Excellence (EU27 and AC)

NEW!

Merger of formerly two phases (Business plan + Implementation of the Centre of Excellence) in a single project evaluated in a two stage evaluation procedure, and the possibility of evaluating the co-financed part

TEAMING for Excellence: Teaser for Rodrigo Cunha

LESSONS LEARNED

- Clear objectives/ vision/ excellence;
- Make clear pointers to integration with medium to long term growth strategies (10-15 years)
- Well-chosen, carefully structured partnership, and strong engagement from parties;
- Broad alignment with national/regional Smart Specialisation Strategies and synergies with Cohesion Funding (need to make appropriate conditional “space” in ESIF OPs to secure the funding for the implementation of the Centre of Excellence);
- Long term financial commitments from relevant authorities from the outset;
- Clear strategy on handling resources and have clear plans on organisational issues;
- COORDINATOR: strong in project management and proven track record in mobilising national/cohesion funding.

Horizon Europe – Horizontal Activity, *Widening*

- *Rodrigo Cunha (UC)*

Under construction... (probable) Calls in 2021

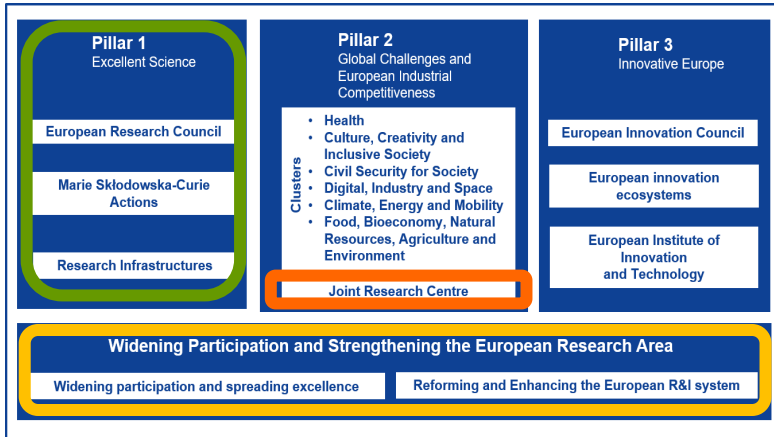
- Twinning for the Western Balkans
(PT cannot be coordinator)
- Teaming
- ERA-Chairs
- Excellence Hubs
- European Excellence Initiative
- Balanced Brain Circulation
(highly probable to be articulated with MSCA)
- Mobility Programme for Science Managers



Horizon Europe: 2021-2027

PERIN Portugal in Europe
Research and Innovation Network

FCT: NCPs and National Delegates



Visit us at ***perin.pt***
and at the ***FCT*** webpage
dedicated to ***Horizon Europe***



📍 Rui Munhá
✉️ rui.munha@fct.pt
☎️ (+351) 213 911 538

ERC, Widening



📍 Luís Mota (FCT)
✉️ luis.mota@fct.pt
☎️ (+351) 213 917 648

ERC, MSCA, Widening
JRC, EURATOM



📍 Marta Abrantes (FCT)
✉️ marta.abrantes@fct.pt
☎️ (+351) 213 911 596

RIs, ERIC



📍 David Marçal (FCT)
✉️ david.marcal@fct.pt
☎️ (+351) 213 924 350

MSCA



📍 Daniel Carapau (FCT)
✉️ daniel.carapau@fct.pt
☎️ (+351) 213 911 514

RIs



📍 Rita Cavaleiro (FCT)
✉️ rita.cavaleiro@fct.pt
☎️ (+351) 213 911 541

EURATOM